



Hammerfest municipality

HAMMERFEST – Leads the way



Proximity to the fields

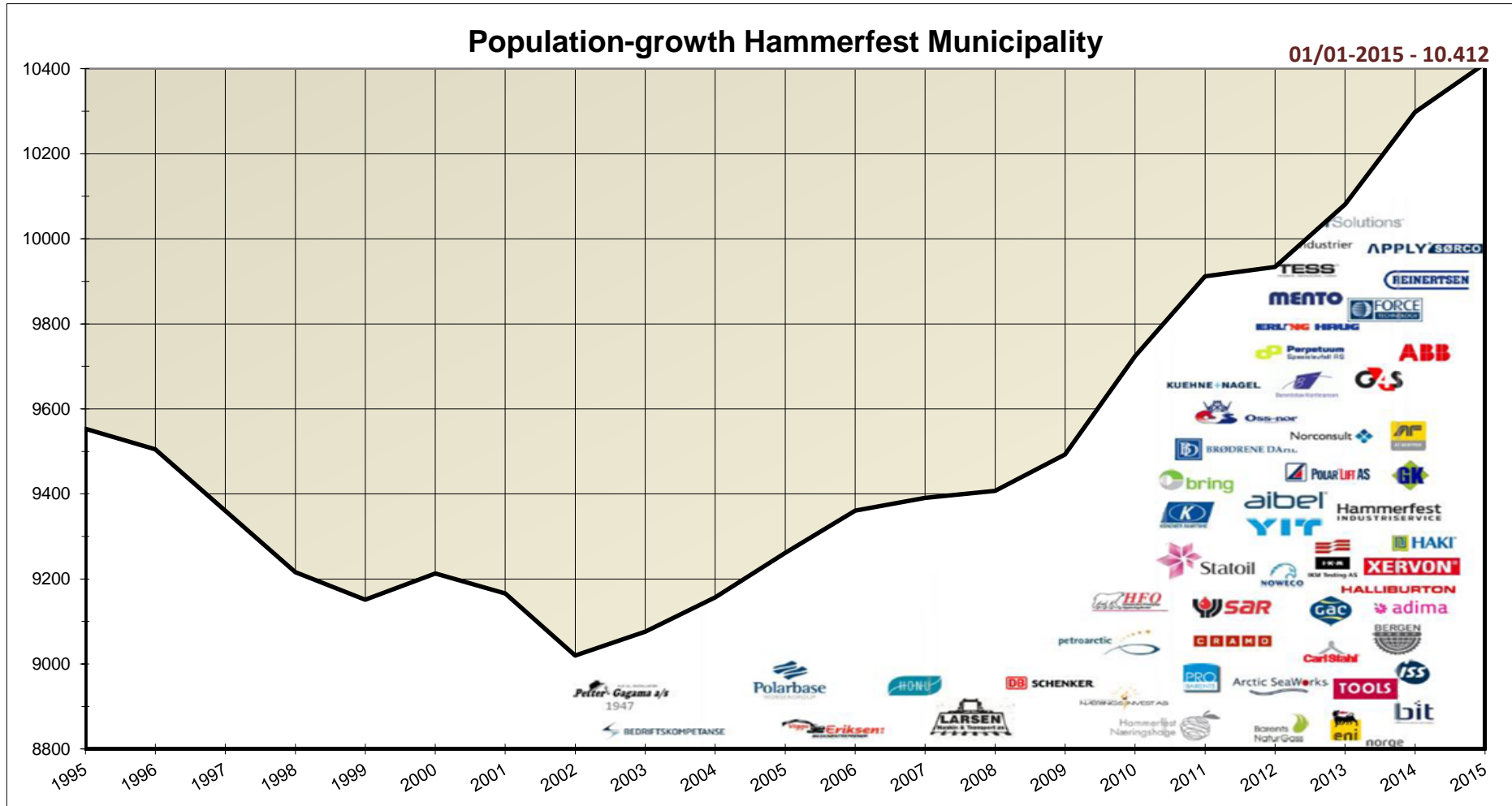


Hammerfest municipality

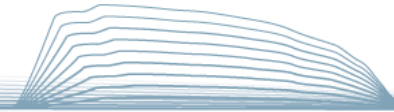
- Population
 - 10400 inhabitants
- Areal
 - 847 km², on 3 islands
- Regional center
 - Communications, trades and services, hospital, fish industries, education, oil and gas industries
- Businesses
 - Fishing, fish farming, public and private services, Industrial petroleum cluster



Decision Snøhvit 2002, Decision Goliath 2008



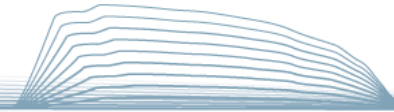




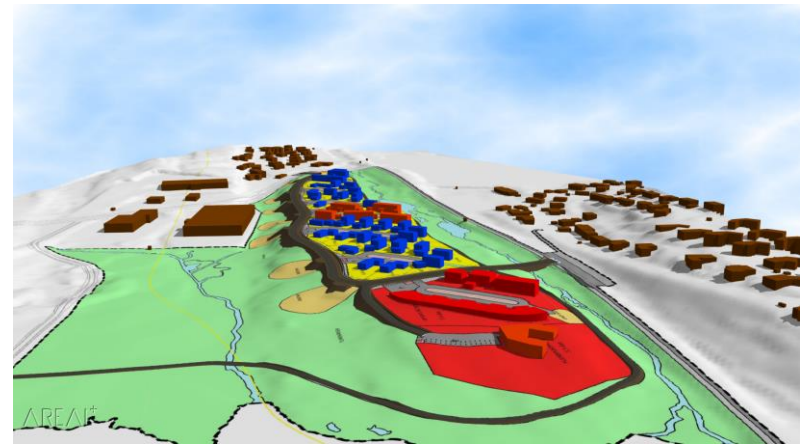
Renewal of the city - Boardwalk

An aerial night photograph of a town built on a snowy hillside overlooking a dark fjord. The town is illuminated by warm yellow lights from windows and streetlights, with light trails from traffic on a winding road. In the foreground, a large, modern building with a glass facade is brightly lit with blue and purple lights. The background shows snow-covered mountains under a dark blue twilight sky.

THE UPSIDE



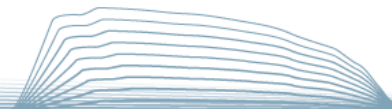
Housing – 1800 new homes





New school buildings and daycare for all children





Kirkeparken Caring Center



City bypass road



Melkøya



Goliat

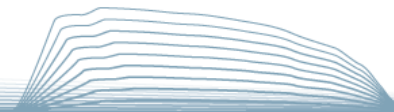


Petroleumcluster



Industrial areas





Planning for seafood cluster in Hammerfest





POLARBASE

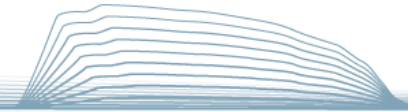
New Airport



Upgrade of regional road RV94 Skaidi – Hammerfest







Variations of Hammerfest municipality

