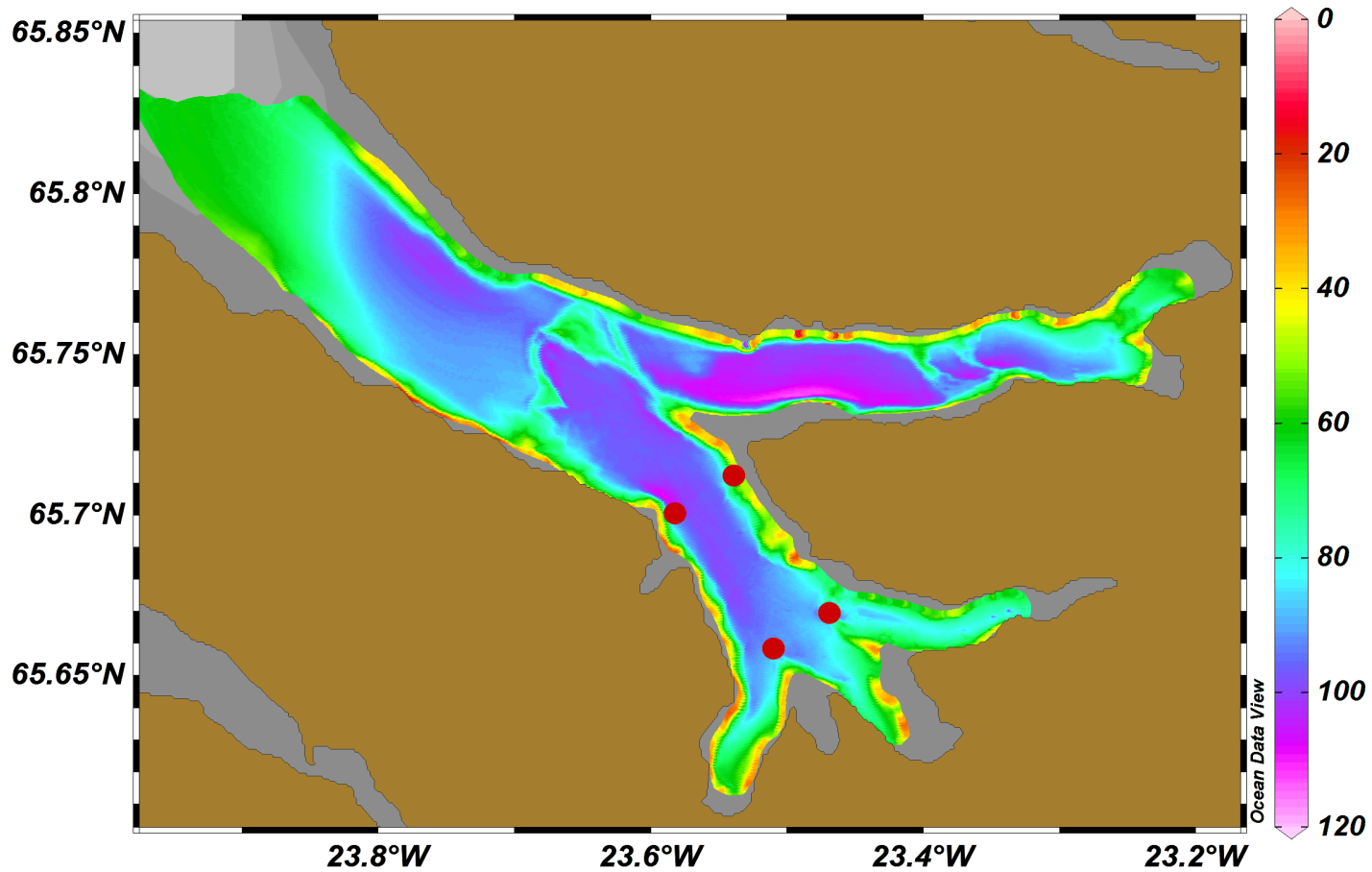




# Burðarþol fjarða

Héðinn Valdimarsson, Hafrannsóknastofnun



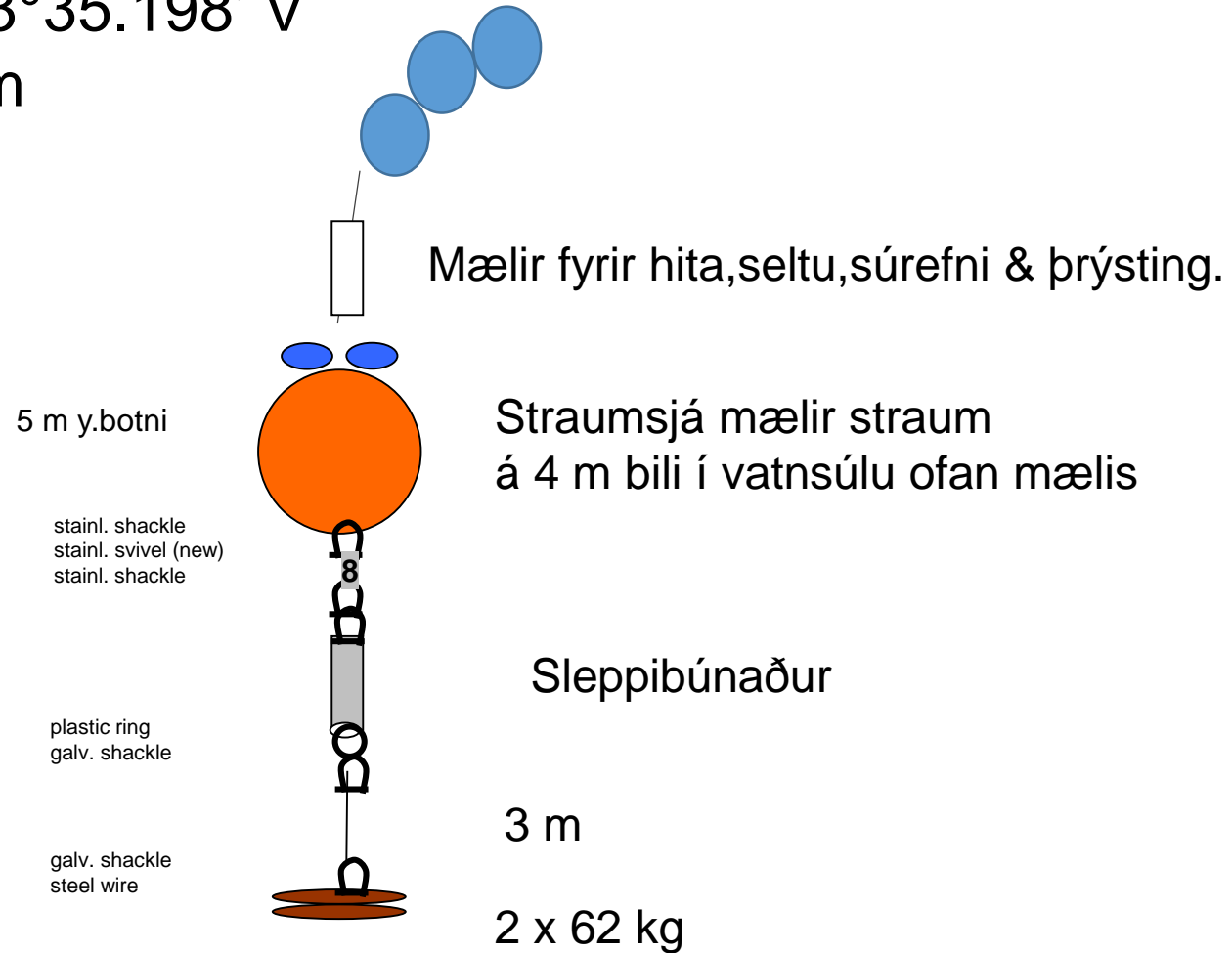
Botndýpi Arnarfjarðar og mælistöðvar í Suðurfjörðum

# Straumlögn, Arnarfjörður Suðurfirðir, **ASNV**

lagt 16.08.2014 09:27 Bsæm

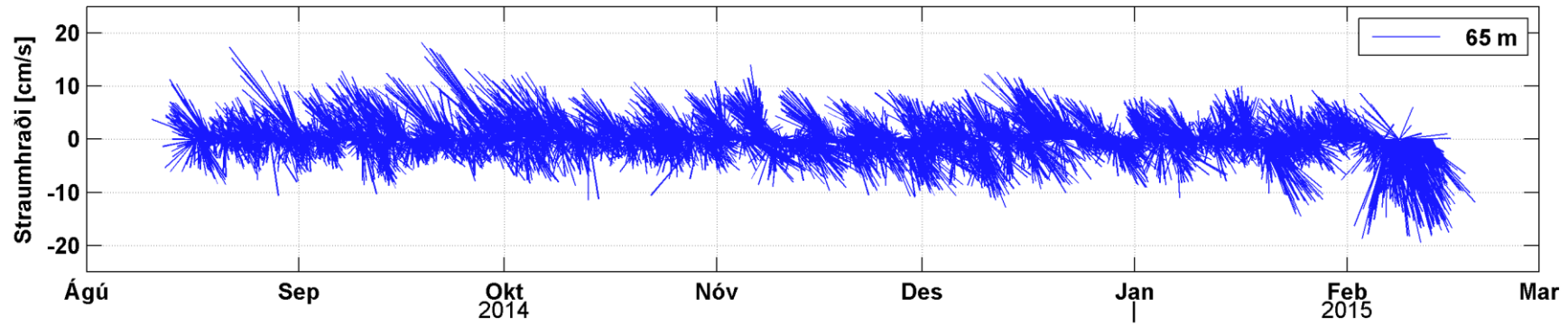
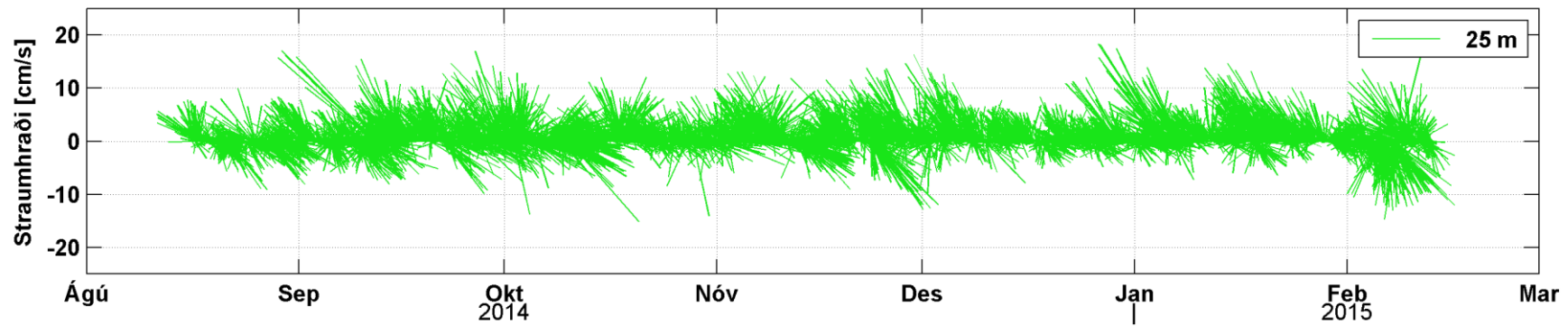
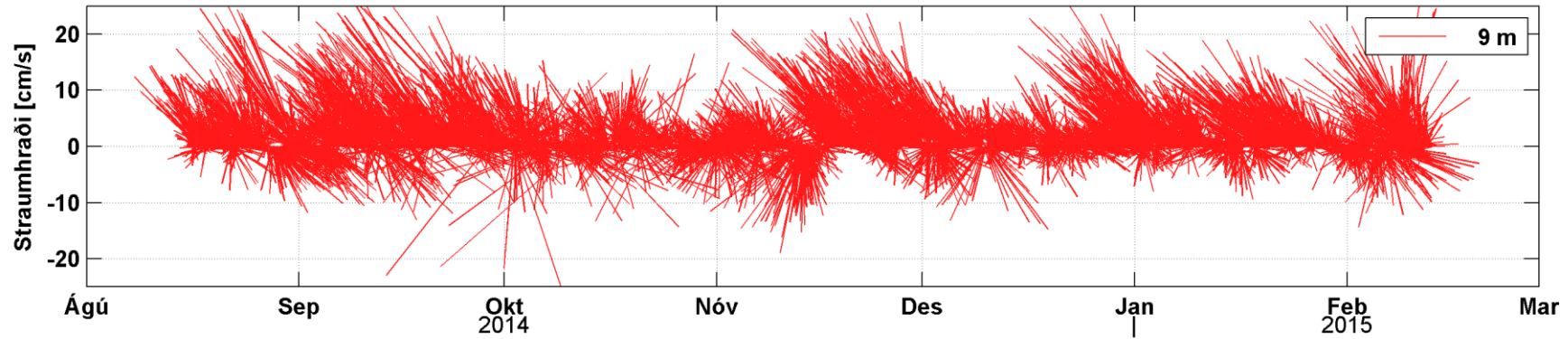
65°42.096' N 23°35.198' V

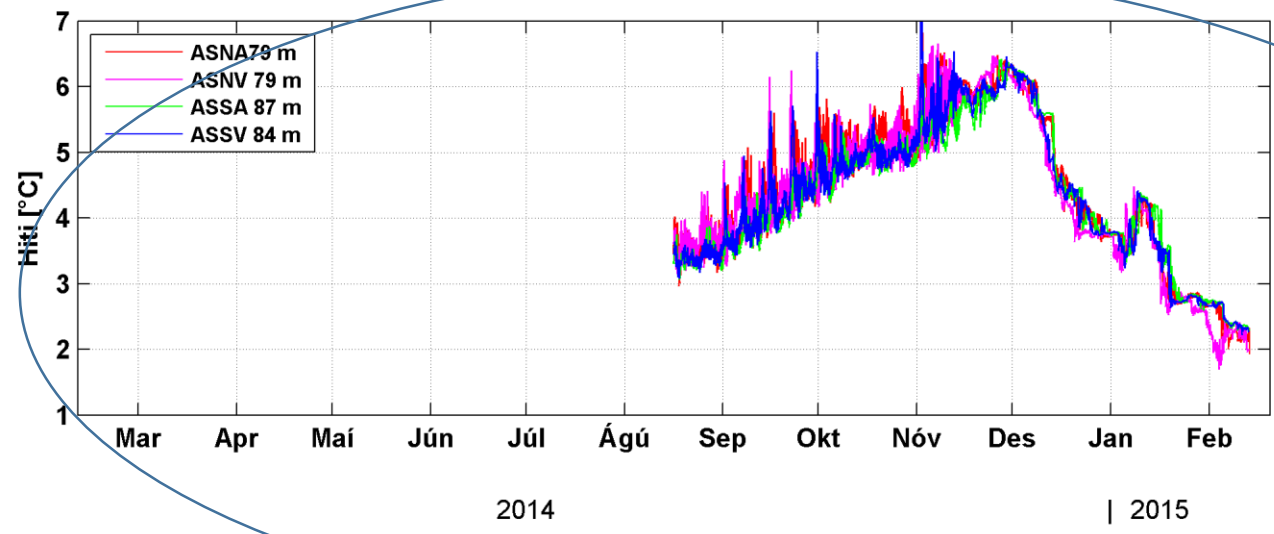
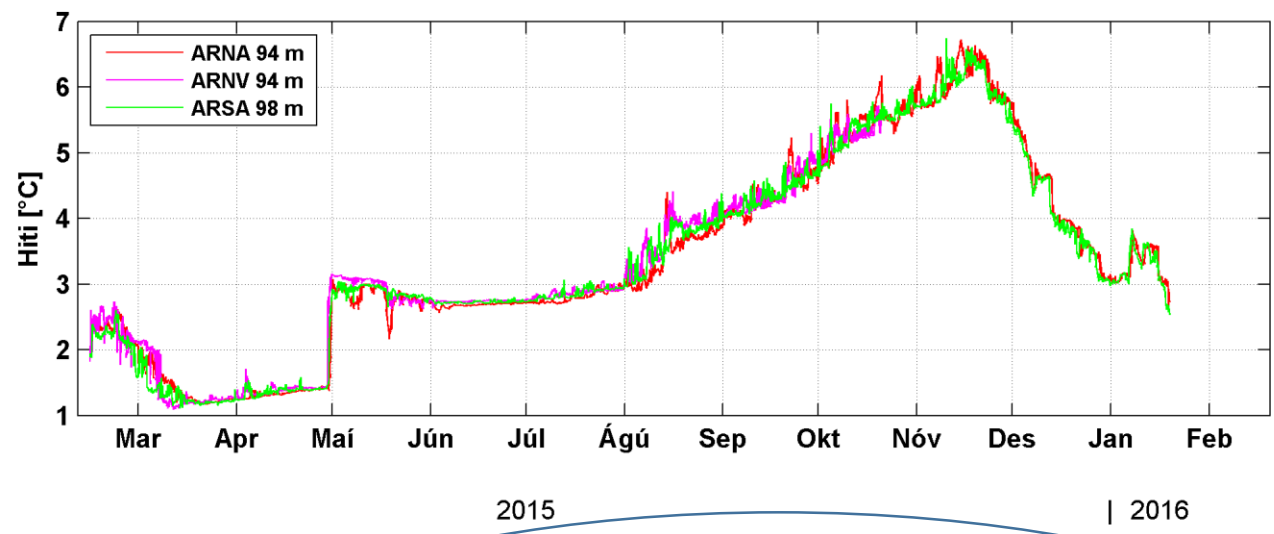
Bd xx fm - 82 m

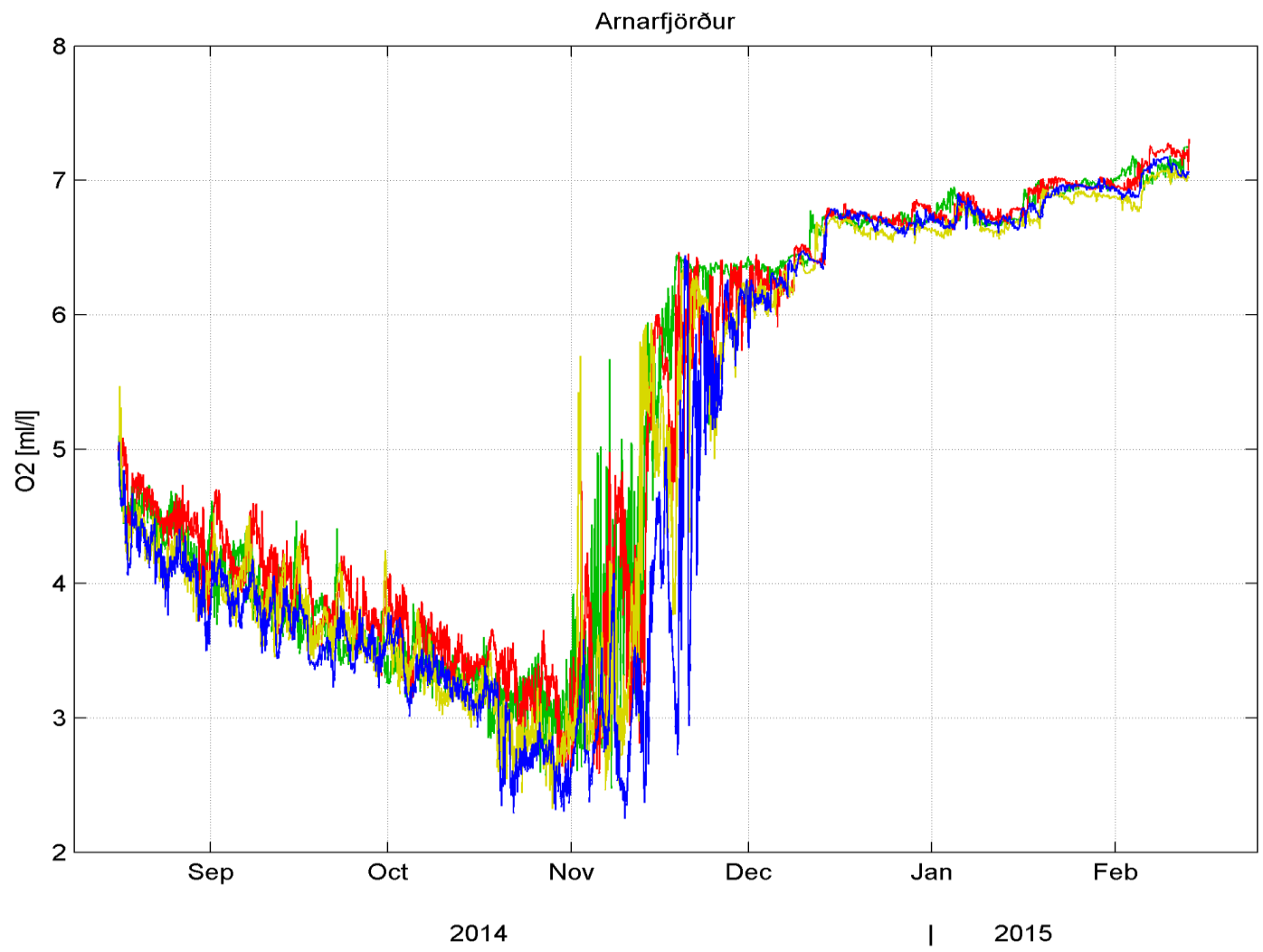




ASNA







Súrefni í botnlagi skv mælingum

## ACExR ástandslíkan/ þróað frá Ancylus líkani

Þriggja laga „box“ líkan

Yfirborðs-, milli- og botnlag

(í sumum fjórðum eingöngu tvö lög)

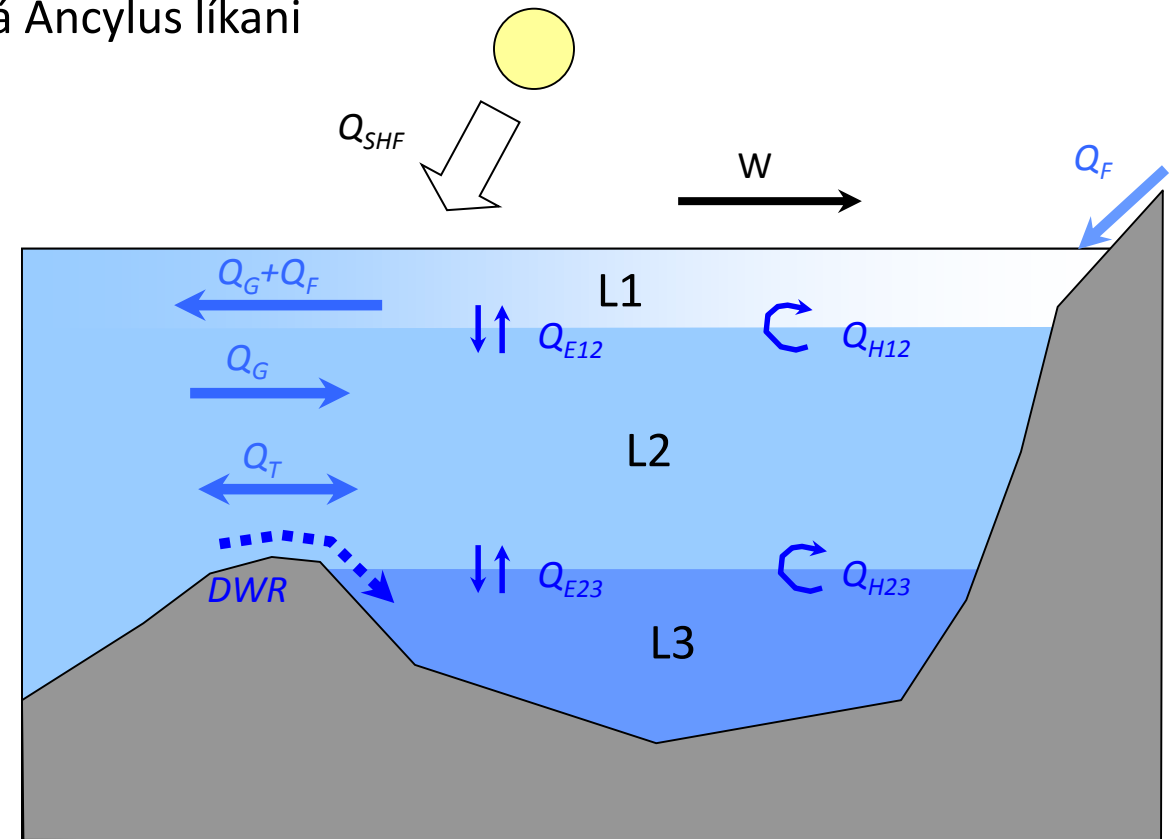
Keyrt í 365 daga

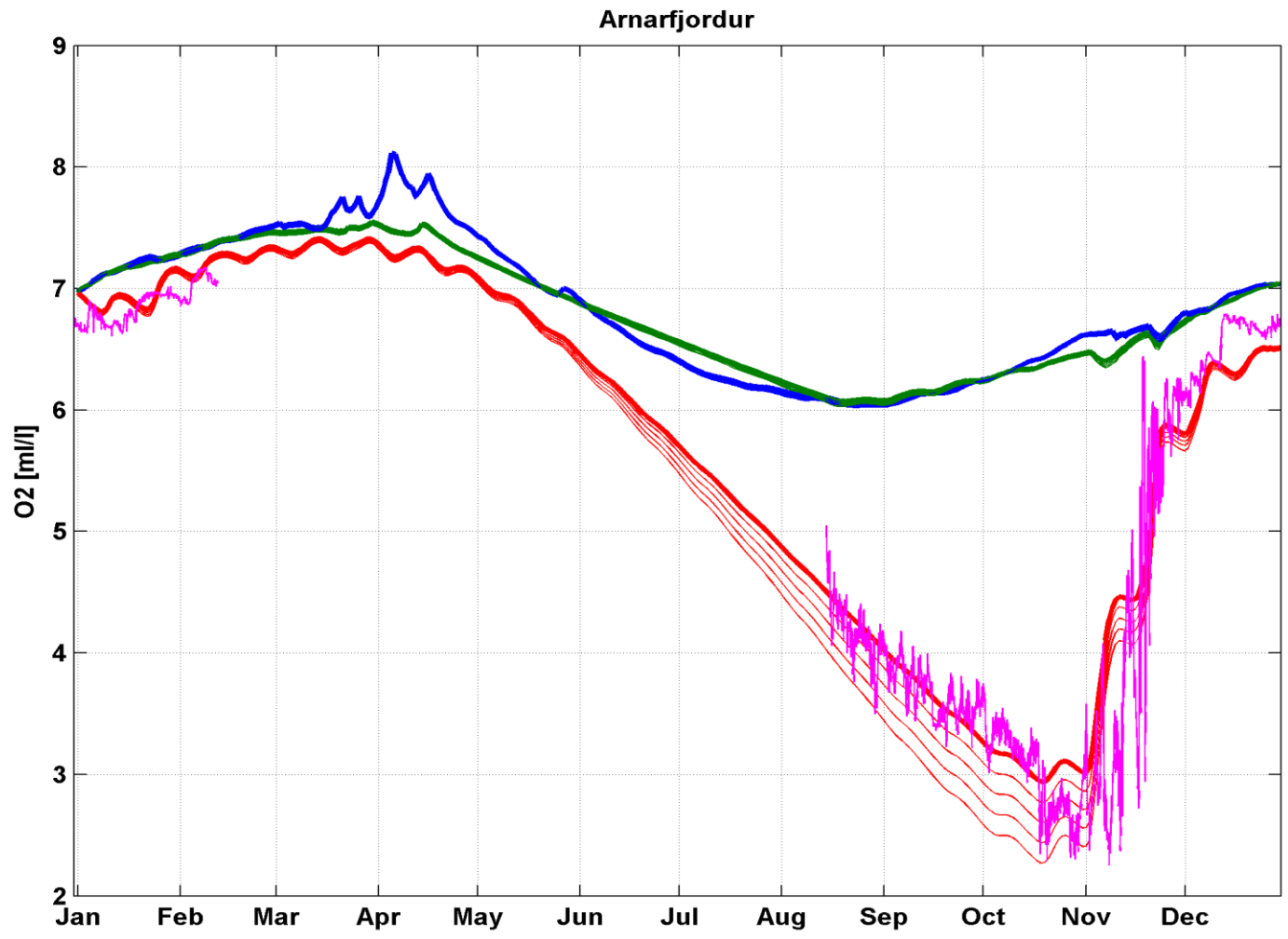
Ytri verkan:

- Hafið hiti/selta í fjarðarmynni
- $Q_F$  Ferskvatns flæði í fjörð (ár & úrkoma)
- Sjávarföll (SSH)
- $W$  Vindur
- $Q_{SHF}$  Hitaflæði um yfirborð

Flæði milli laga

- $Q_E$  Iðustreymi/blöndun,  $kz$ , (heldur rúmmál lags, en jafnar T,S)
- $Q_G$  Grunnstreymi v/eðlisþyngdar: yfirborðsflæði út, jafnað með innflæði millilags
- $Q_H$  Blöndun laga v/sjávarfalla,  $qw$  (þynnir djúplag, en heldur T,S neðra lags)
- $Q_T$  Meðalstraumur
- $DWR$  Endurnýjun djúplags,  $\rho(\text{ocean}) > \rho(L3)$



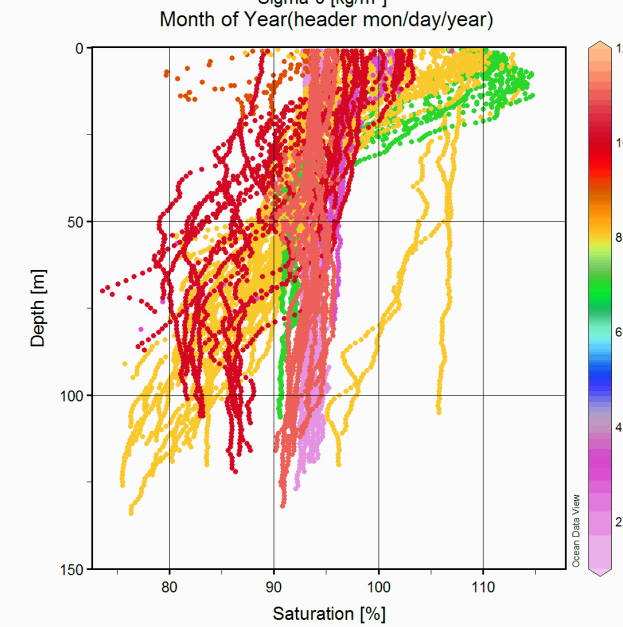
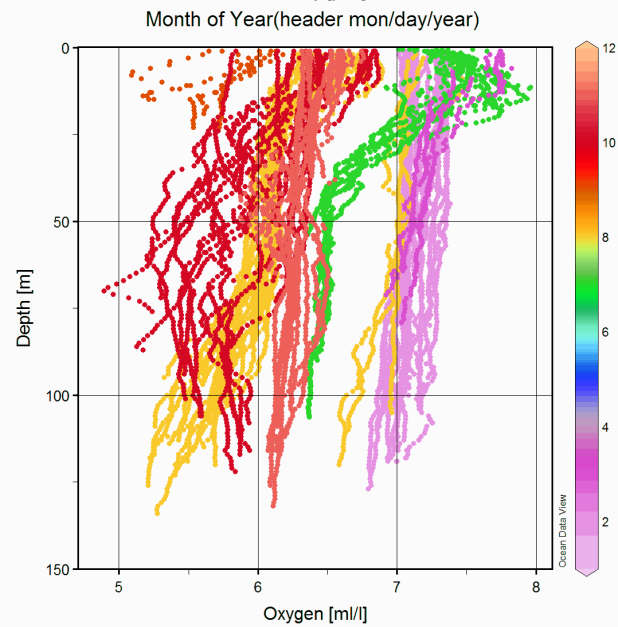
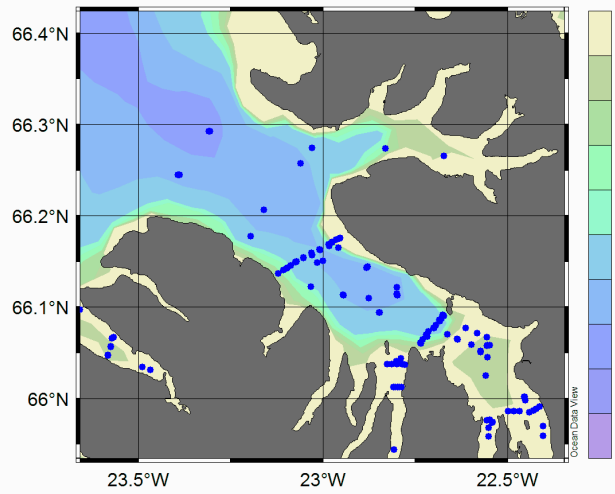
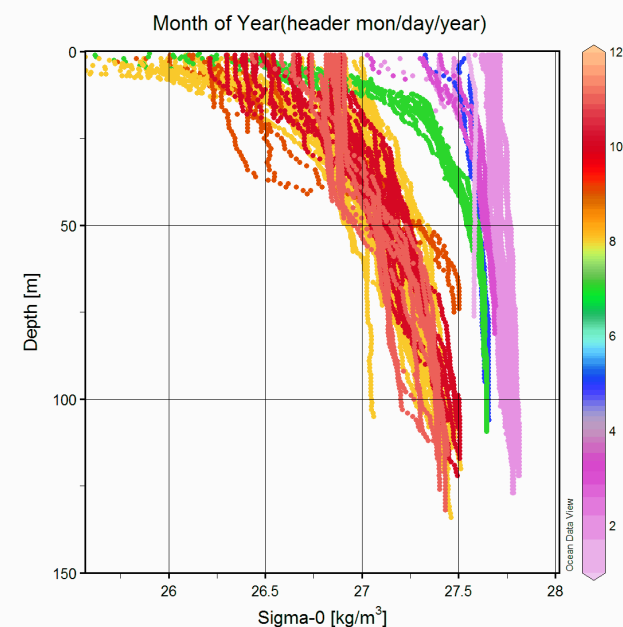
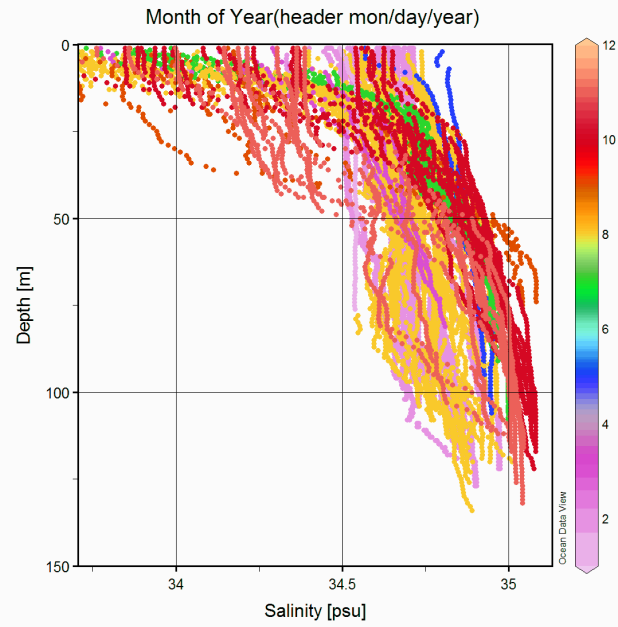
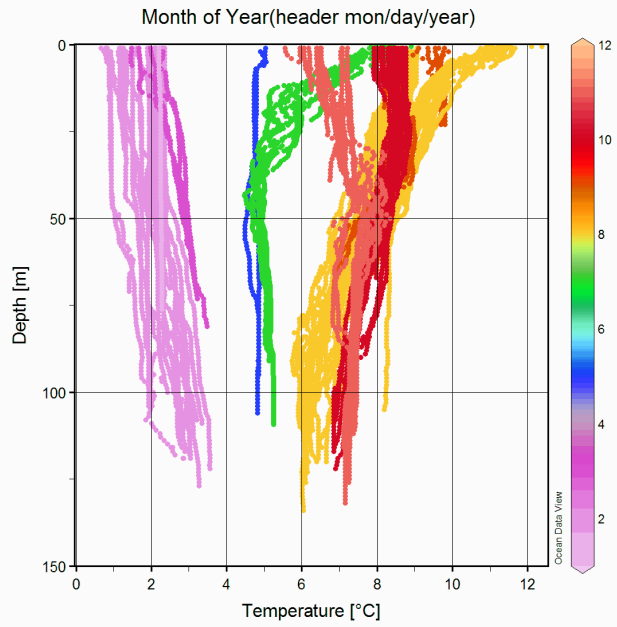


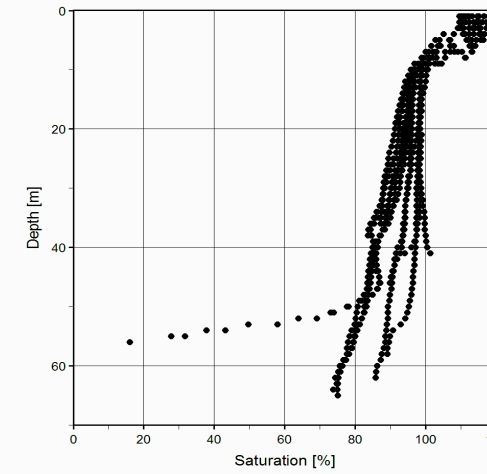
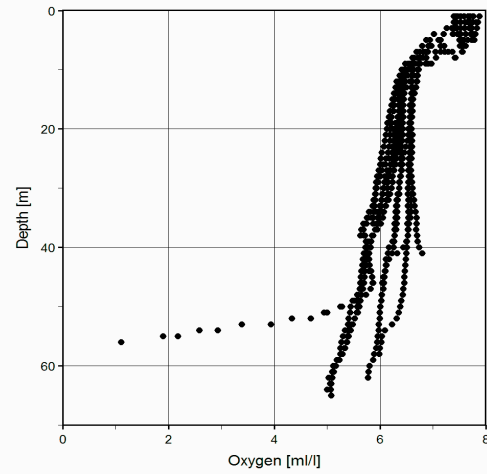
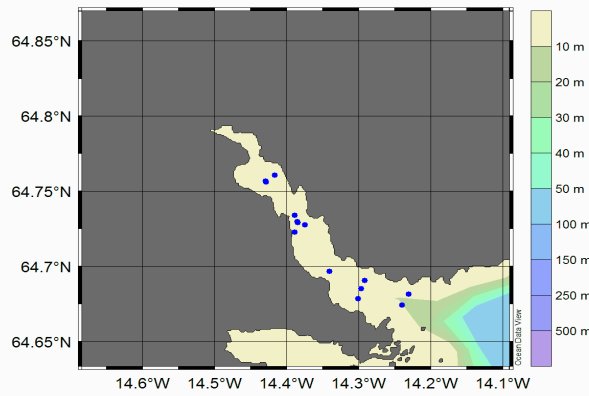
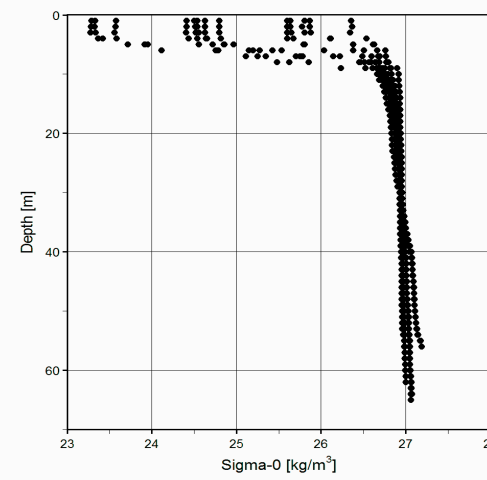
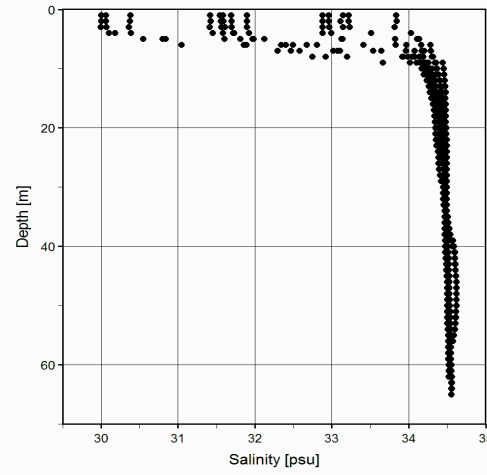
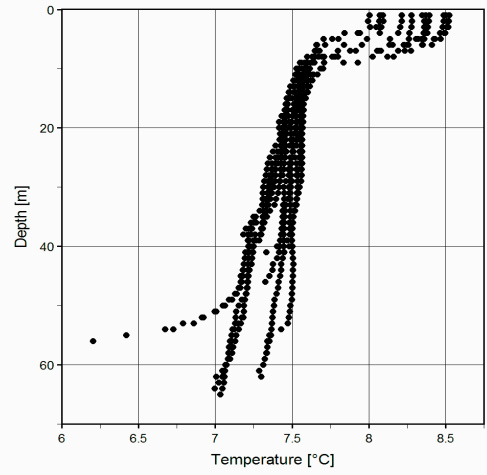
Rauðu mjóu línurnar sýna niðurstöður líkansins fyrir áhrif 10, 20, 30 og 40 þúsund tonna eldis í firðinum á súrefnisstyrk í botnlaginu.



Síritandi mælitæki  
Slakað niður  
Mælir hita, seltu,  
Súrefni  
Tekur sjósýni til  
Greiningar fyrir  
Næringarefni og  
súrefniskvörðun







Berufjörður, afgerandi þröskuldar í firðinum mæla gegn instra hluta fyrir eldiskvíar

Burðarþol fjarða byggist á mæligögnum um :

Strauma

Hita og seltu sjávar

Súrefni

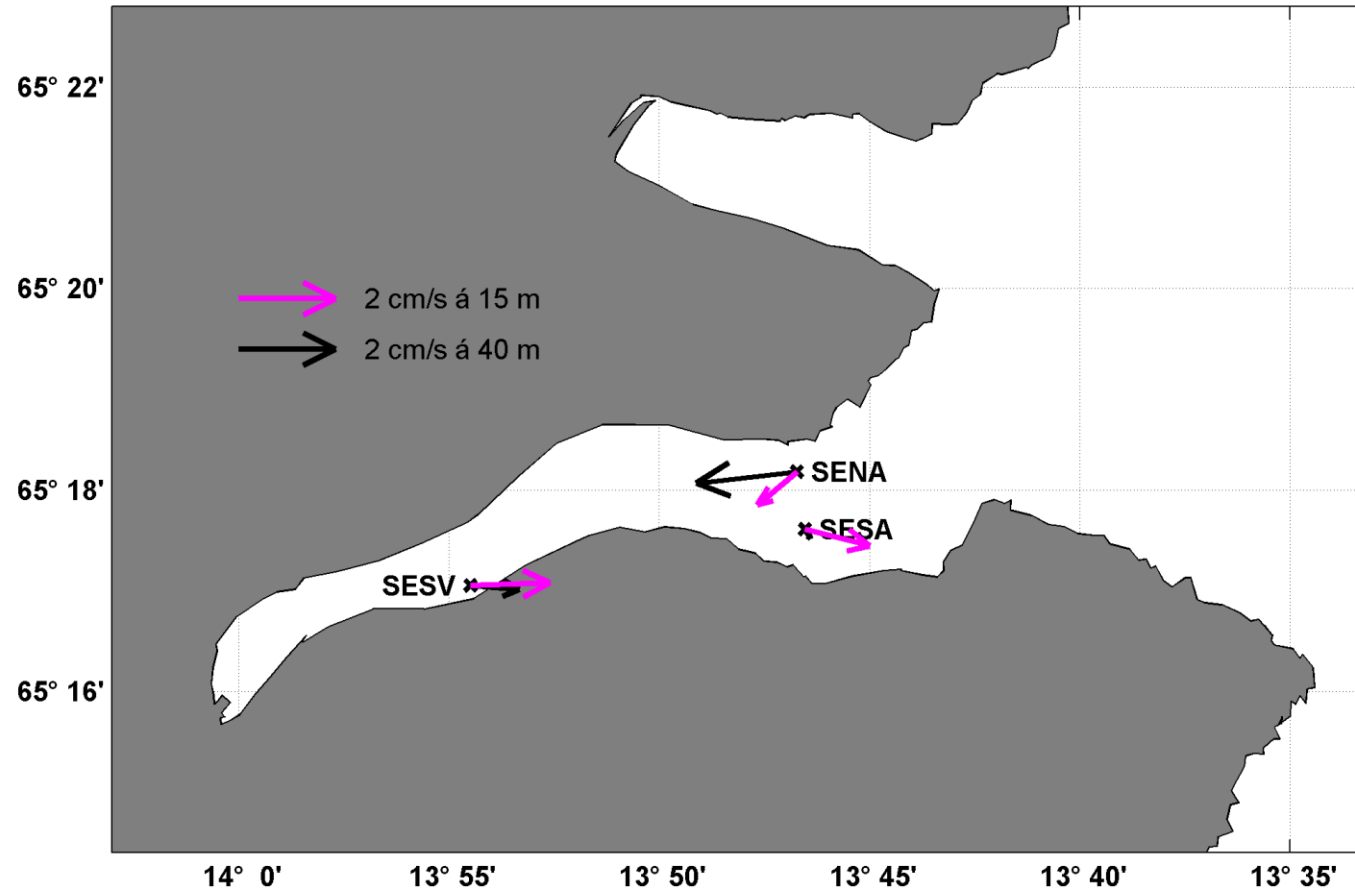
Næringarefni

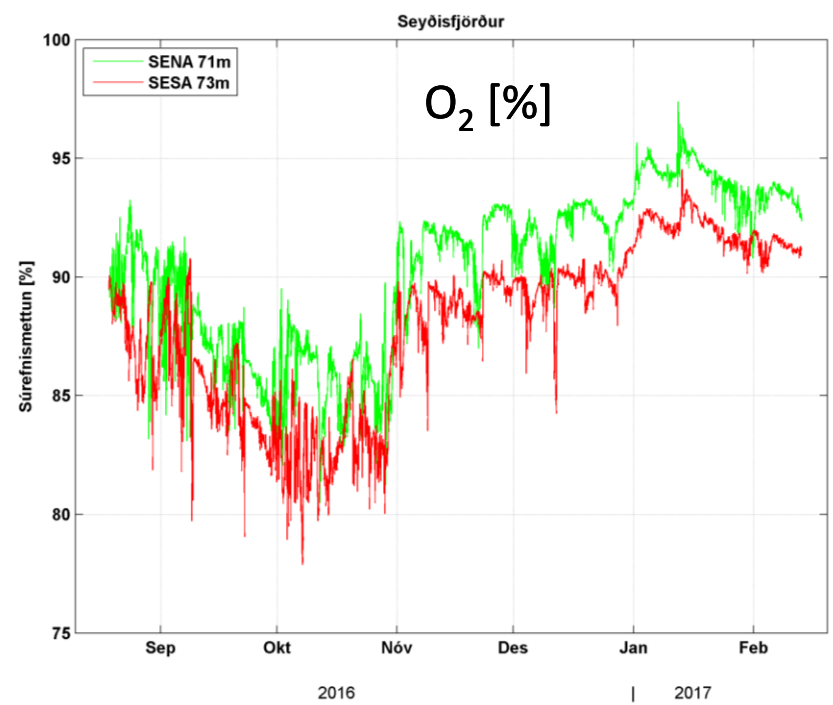
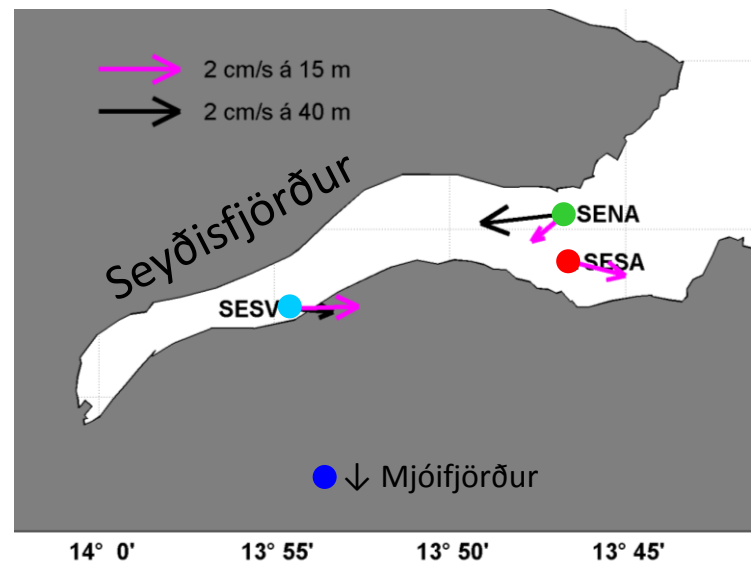
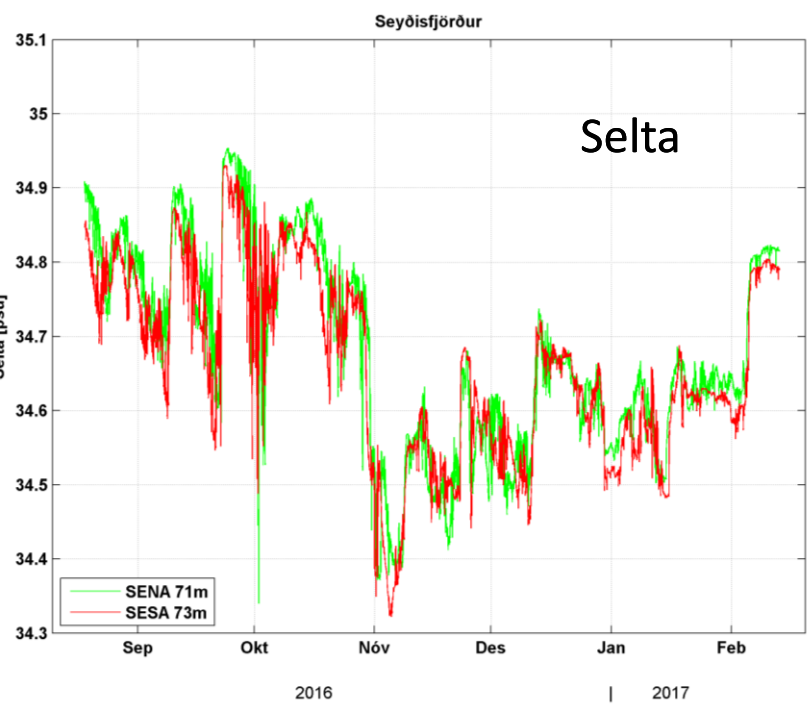
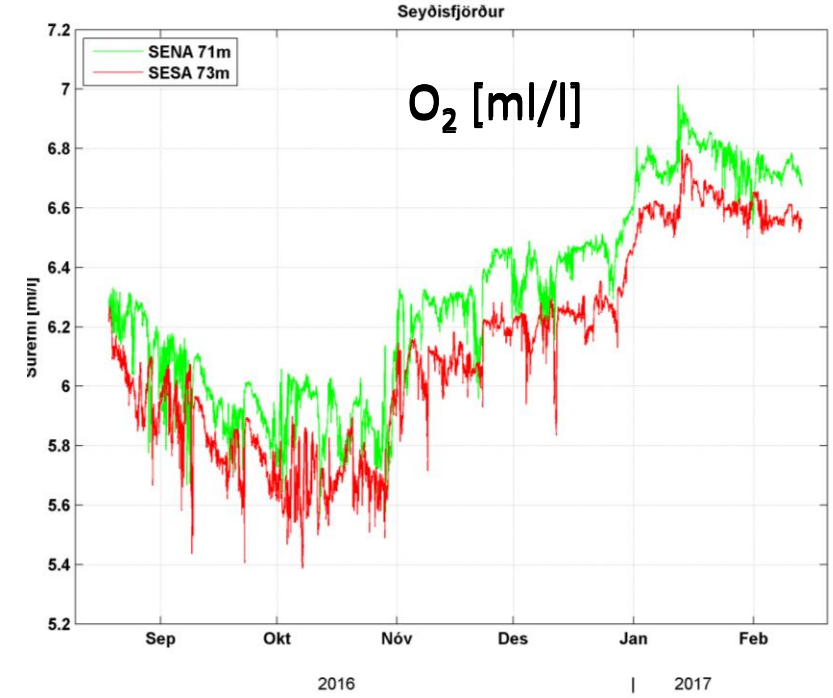
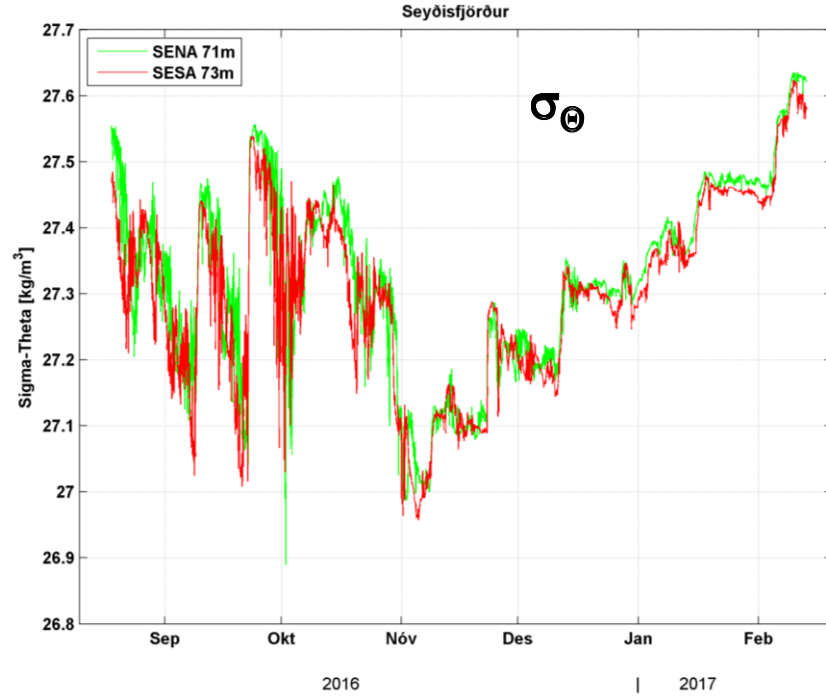
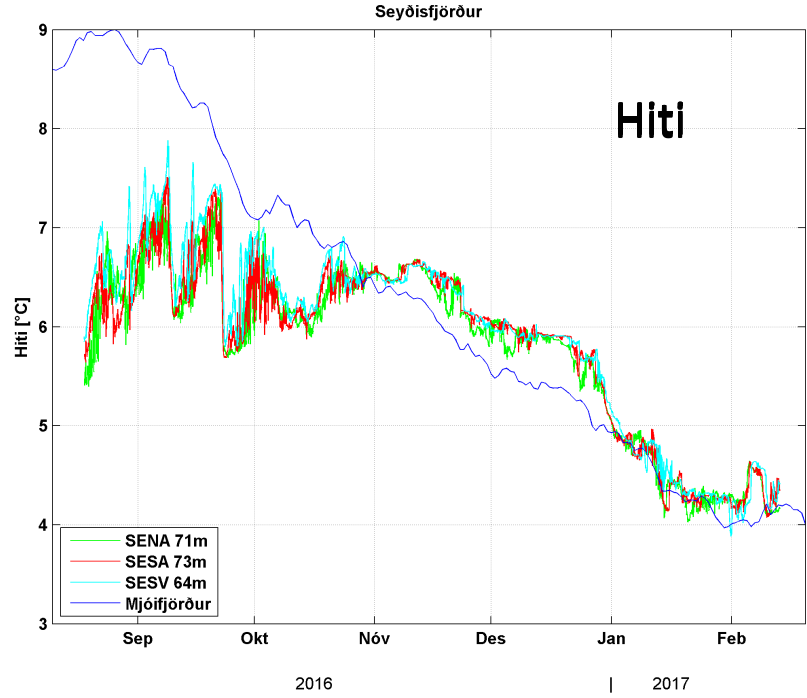
Þekkingu á plöntusvifi og setgreiningum

Líkankeyrslum sem aðlöguð eru ofangreindum gögnum

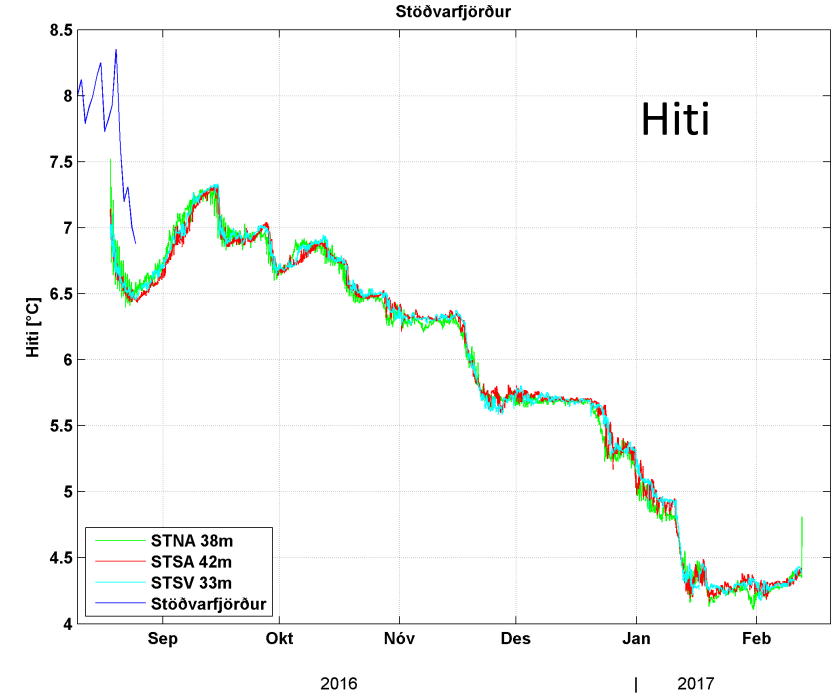


Seyðisfjörður  
3 Straumlagnir  
18.8.2016 – 13.2.2017

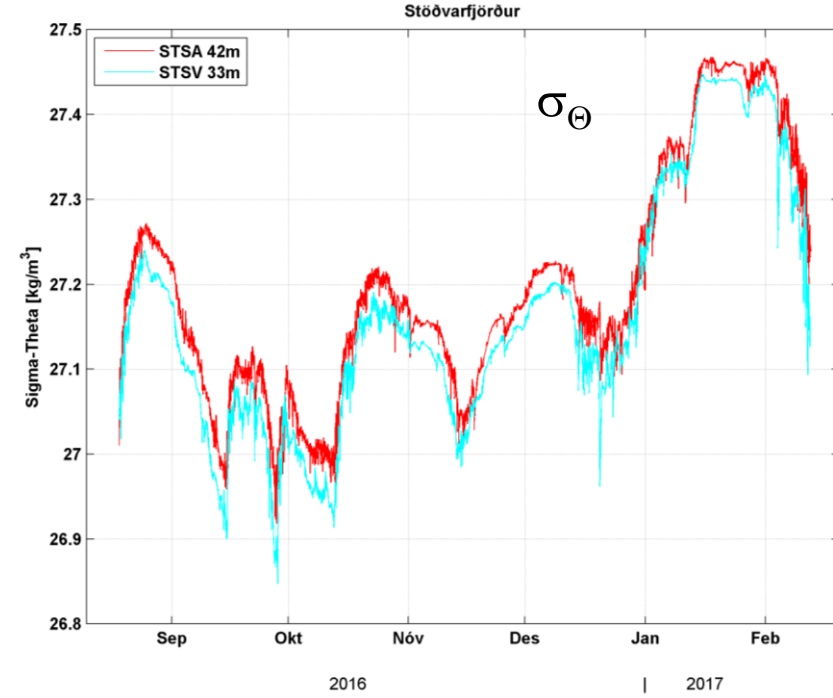




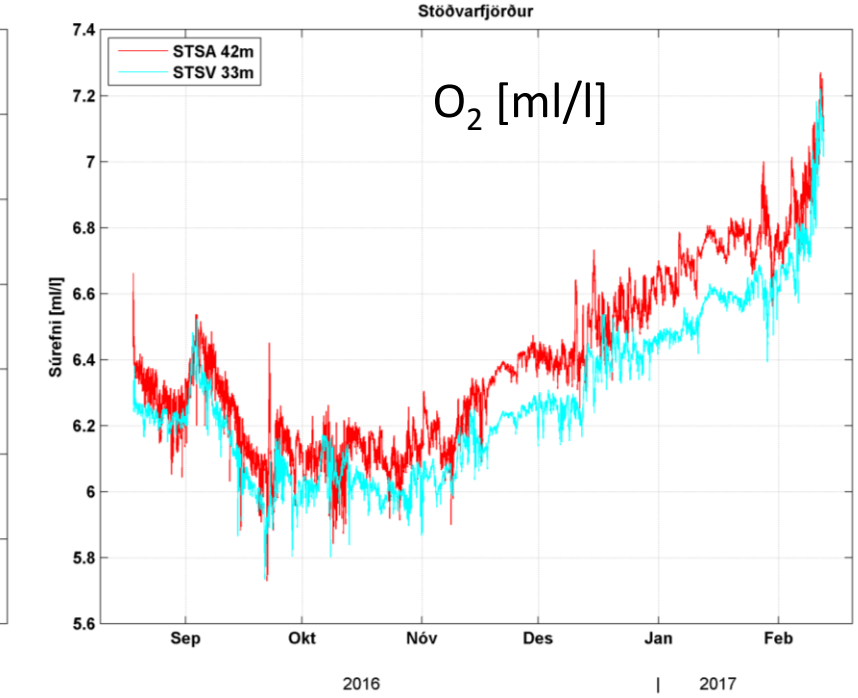
Stöðvarfjörður



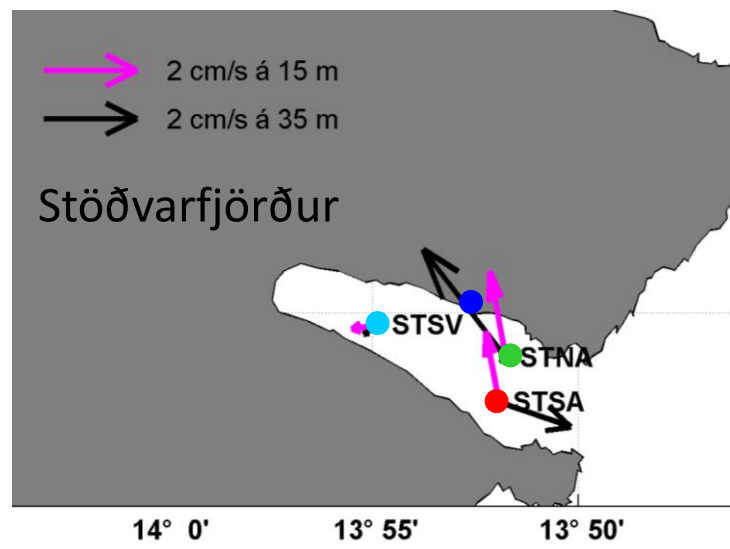
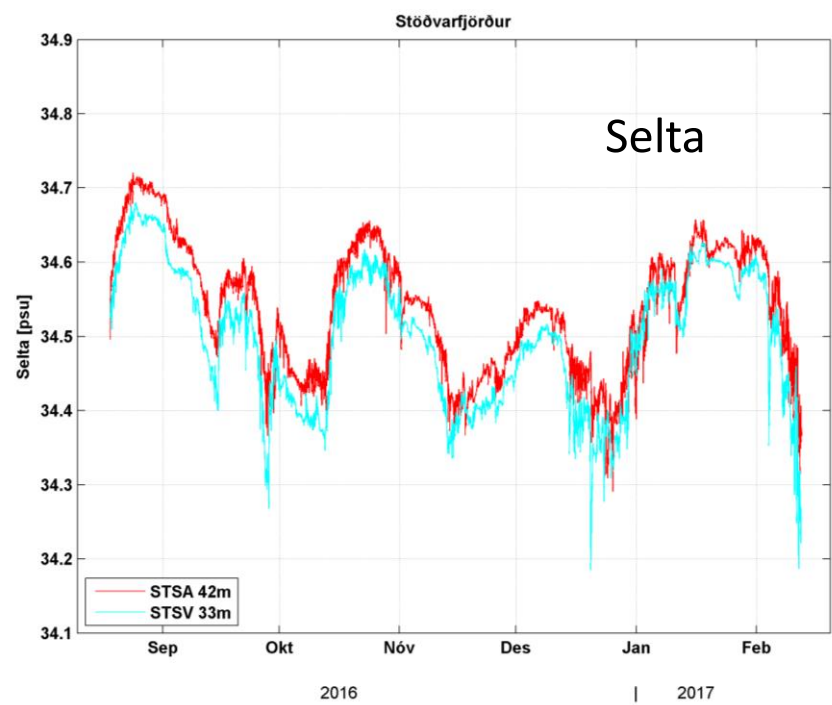
Stöðvarfjörður



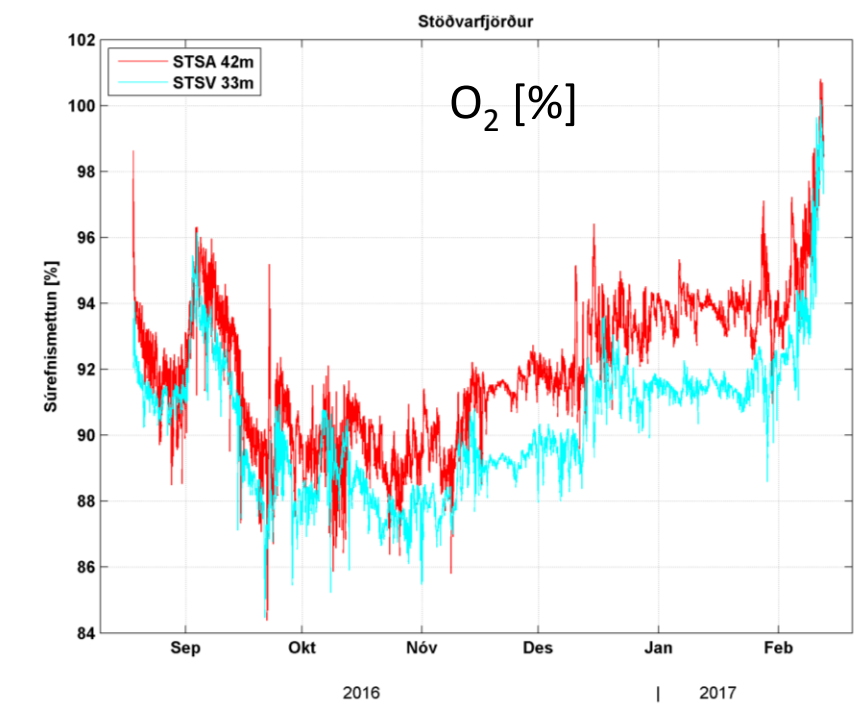
Stöðvarfjörður



Stöðvarfjörður



Stöðvarfjörður

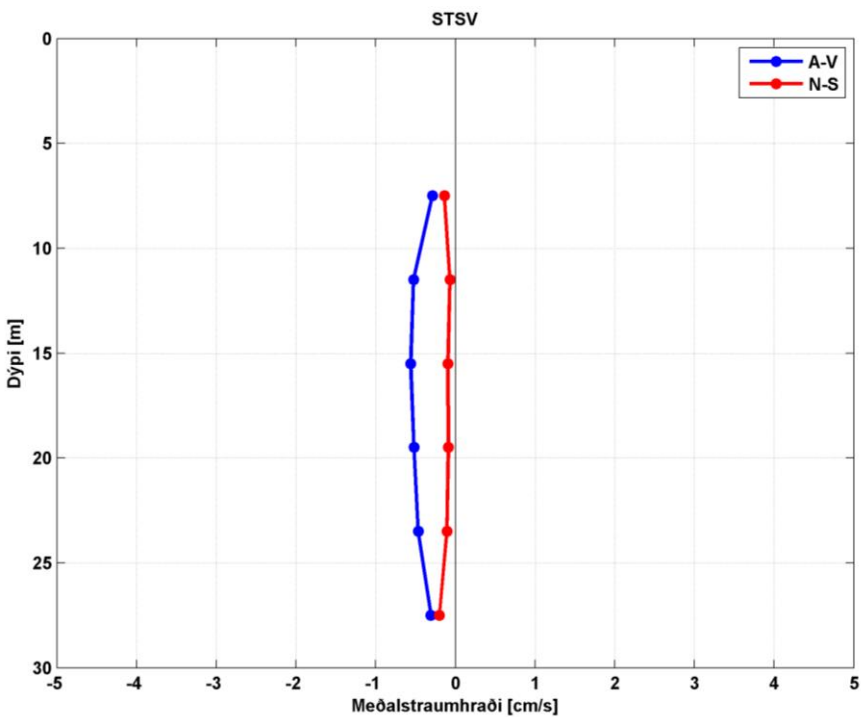
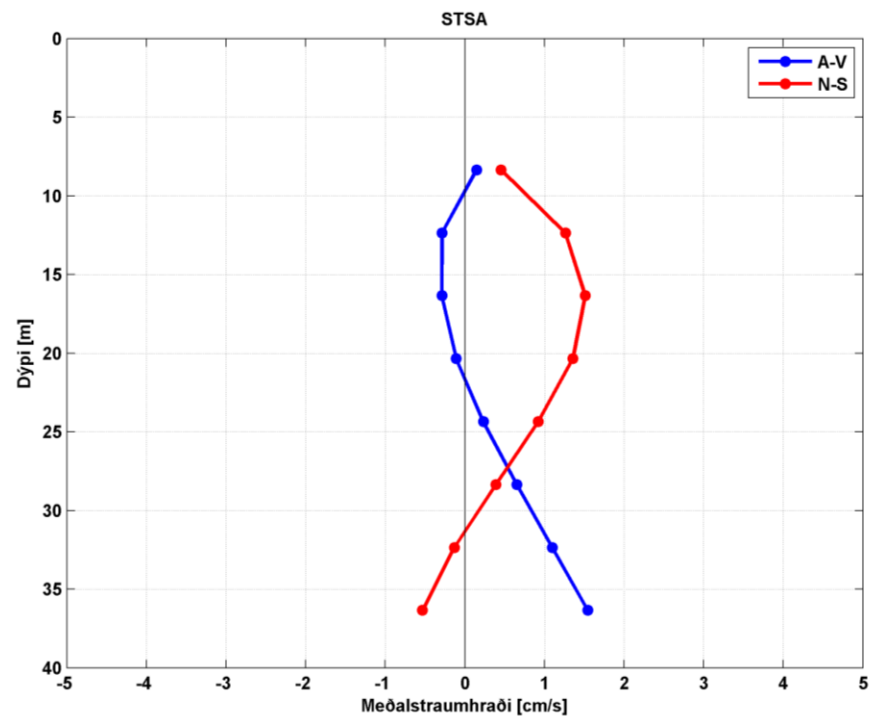
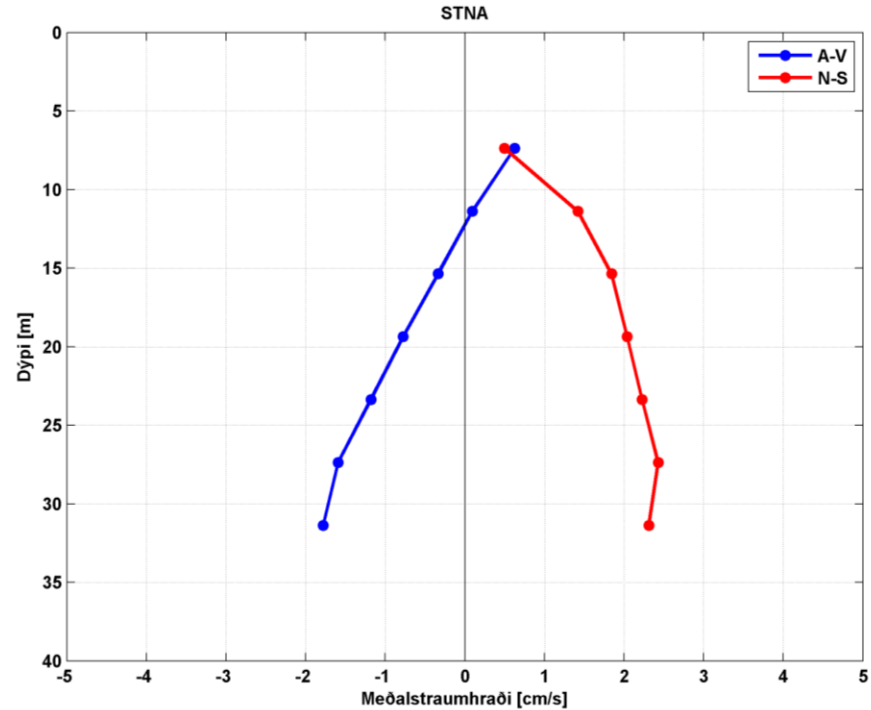
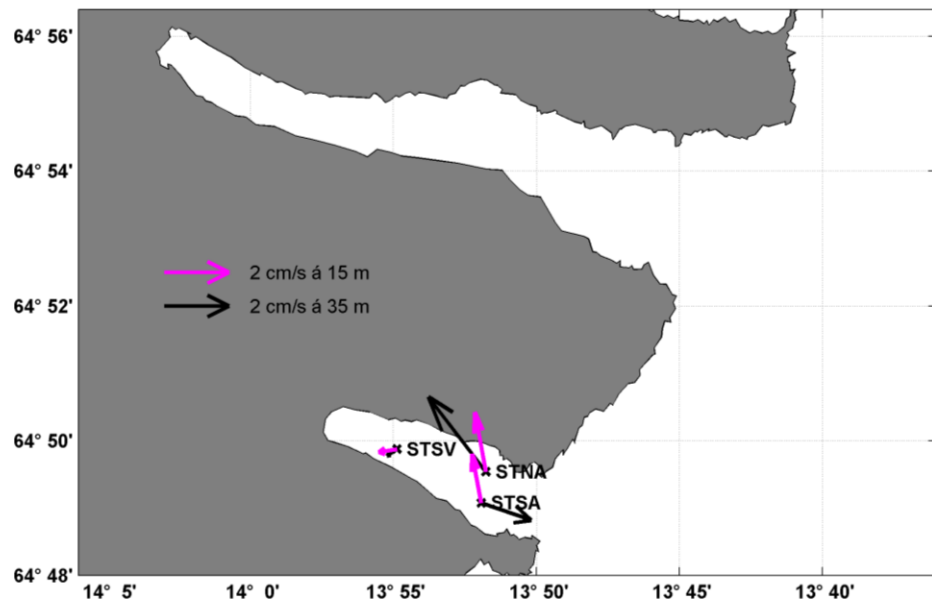




# Stöðvarfjörður

## Meðalstraumur

18.8.2016 – 12.2.2017





Reykjavíkurhöfn 1918

Takk fyrir



Eyjafjordur á hafísárunum eftir 1965

